



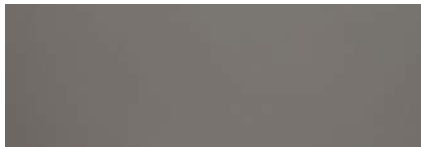
Porcelain



Ivory



Pearl



Mink



Putty



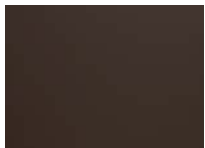
Biscuit



Oatmeal



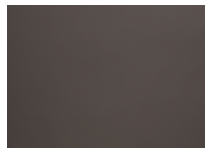
Sand



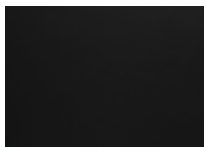
Nutmeg



Mushroom



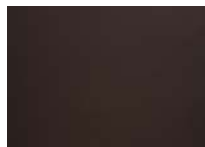
Dark Taupe



Noir



Peat



Bark



Charcoal



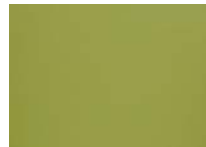
Dove



Mist



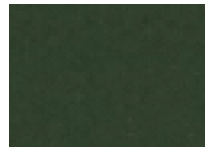
Pistachio



Lime



Sunshine



Forest



Olive



Sage



Duck Egg



Chalk Blue



Aegean



Slate Blue



Midnight



Sapphire



Denim



Teal



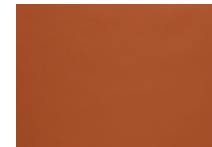
Jade



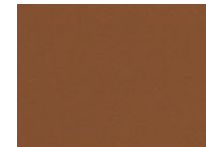
Mustard



Ochre



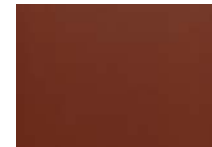
Burnt Orange



Tan



Rust



Fire



Autumn



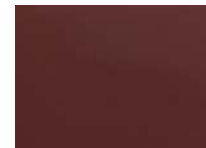
Claret



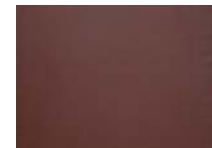
Wine



Dusky Pink



Ruby



Maroon



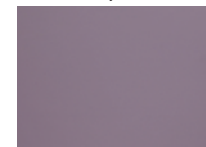
Misty Rose



Damson



Raspberry



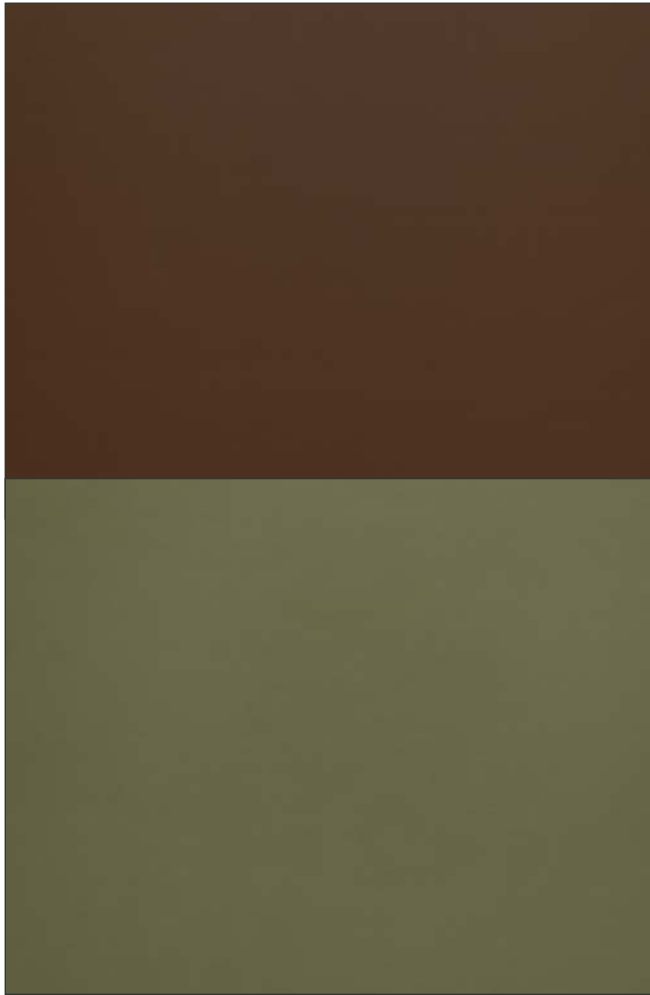
Heather



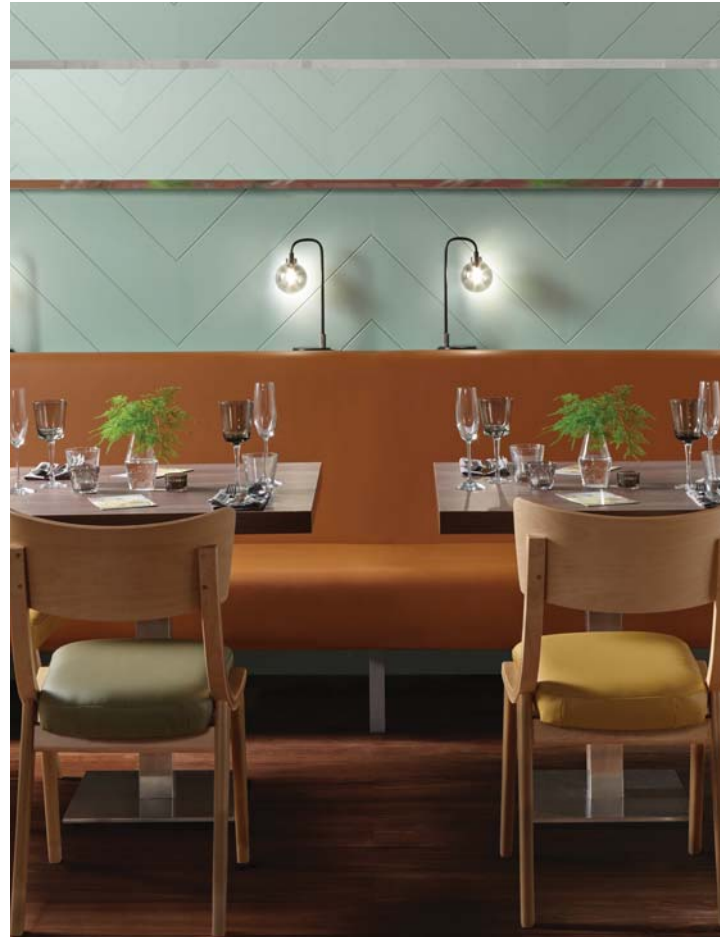
Plum



Blackberry



Designs from top to bottom:  
 Burghley Rust  
 Burghley Olive



ILIV  
 — CONTRACT TEXTILES —

Burghley  
Faux Leather

Upholstery and Reupholstery

Stain Resistant

Waterproof

Flame Retardant to Crib 5

Anti-Bac

## PRODUCT SPECIFICATION

<b>Product</b>	<b>Burghley</b>
<b>Description</b>	Faux Leather
<b>Composition</b>	PVC/PU Coating with Polyester/Cotton Backing
<b>Width</b>	140cm Approx
<b>Weight</b>	650gm <sup>2</sup> Approx
<b>Abrasion</b>	350,000 cycles with no surface break down
<b>Waterproof</b>	BS 3424 - Hydrostatic head in excess of 2m
<b>Anti-Microbial</b>	Will not support microbial and fungal growth
<b>Flame Retardant</b>	BS7176 medium hazard to ignition source 0, 1 & 5 when tested over CMHR 35 foam BS5852 CRIB 5 EN1021 (1 & 2) M1 IM0
<b>Additional Features</b>	Stain Resistant Finish REACH compliant, Phthalate Free - no use of harmful chemicals
<b>Application</b>	Faux Leather Upholstery for Contract and Heavy Domestic Use.
<b>Cleaning</b>	<ul style="list-style-type: none"> <li>Remove spillages promptly with an absorbent dry cloth.</li> <li>Vacuum and wipe clean regularly with a damp cloth to remove dust particles and prevent build-up of soiling.</li> <li>For general soiling use mild non alkaline soapy water with a none abrasive cloth. Ensure that all cleaning produce residues are fully rinsed out.</li> <li>For heavier soiling/infection control use a 5% sodium Hypochlorite (bleach) solution or Haz tabs can be used.</li> <li>Remove bodily fluids promptly (within 15 minutes), with cold water and clean as above.</li> <li>Do not machine wash, fully immerse or dry clean.</li> <li>Do not apply other chemicals such as furniture polish, stain remover or solvents.</li> <li>Do not use felt tip, ball-point pen or ink to mark as these can leave permanent stains.</li> <li>Remove dye from Denim garments immediately as they will permanently stain if not dealt with promptly.</li> </ul>

Whilst we endeavour to ensure that every batch matches our swatches, variations do occur. If you require an exact match to a previous order please make the Sales Team aware at the time of ordering and if necessary please send a cutting for us to match to.

ILIV Contract Fabrics  
 SMD Group Ltd  
 Pittman Way, Fulwood, Preston  
 Lancashire, PR2 9ZD

T: +44 (0) 1772 665280  
 F: +44 (0) 845 519 7736  
 E: sales@smd-contract.co.uk

[www.ilivcontract.co.uk](http://www.ilivcontract.co.uk)

ILIV  
 — CONTRACT TEXTILES —